

QUB School of Psychology

Psychology: Open Minds, Open Doors

Dr Aideen McParland (Deputy Director of Undergraduate Education)

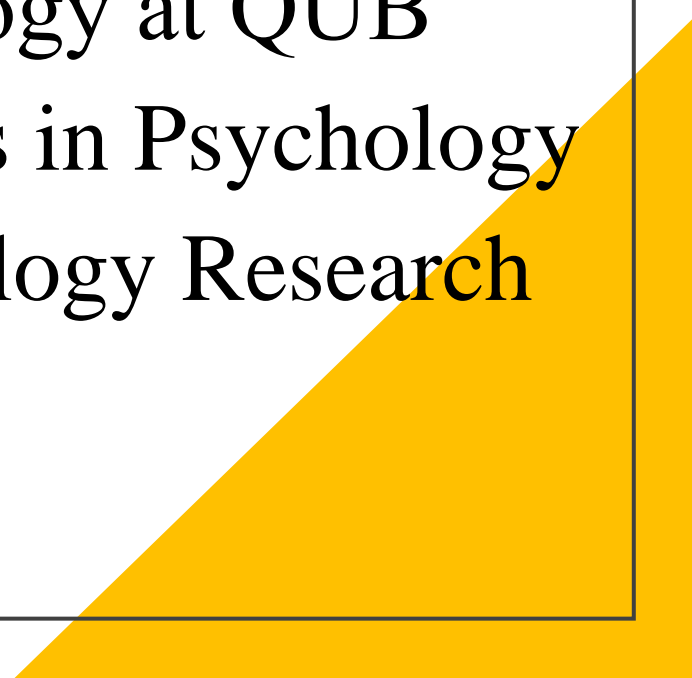


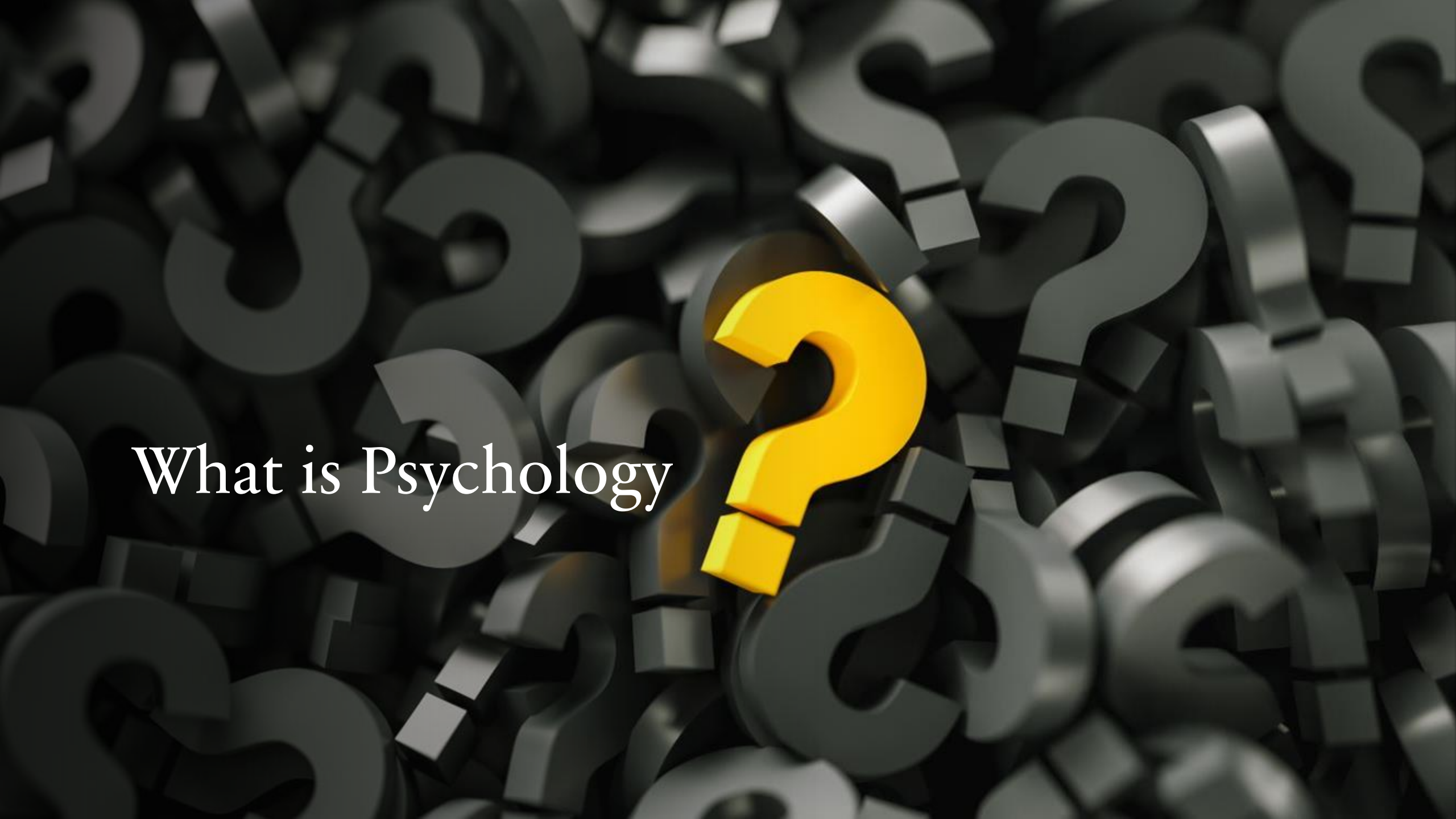
9th September 2023

WELCOME TO THE SCHOOL OF PSYCHOLOGY




Subject Talk Overview

- What is Psychology?
 - Psychology in Action
 - Studying Psychology at QUB
 - Professional Skills in Psychology
 - A Taste of Psychology Research
- 
- A yellow triangular graphic is located in the bottom right corner of the slide, pointing towards the top right.



What is Psychology



“Psychology is the scientific study of the mind and how it dictates and influences our behaviour, from communication and memory to thought and emotion. It's about understanding what makes people tick and how this understanding can help us address many of the problems and issues in society today.” (British Psychological Society, 2021)



The Science Behind Behaviour

*Core Areas of
Psychology...*



Social Psychology



Cognitive Psychology



Individual Differences



Forensic Psychology



Research Methods/Statistics



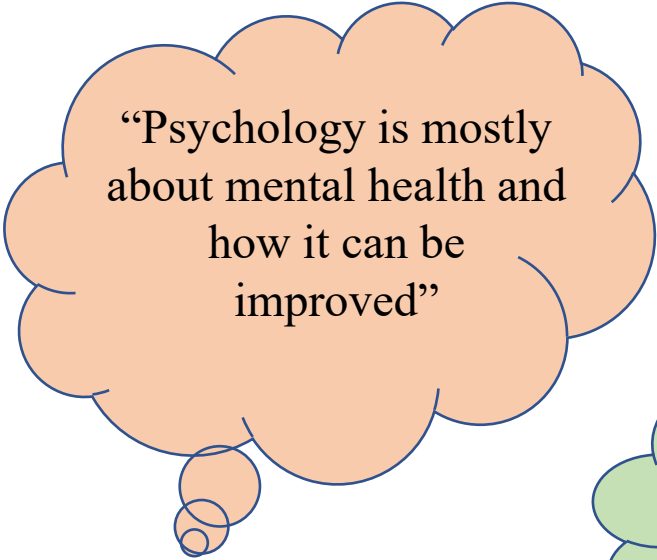
Developmental
Psychology



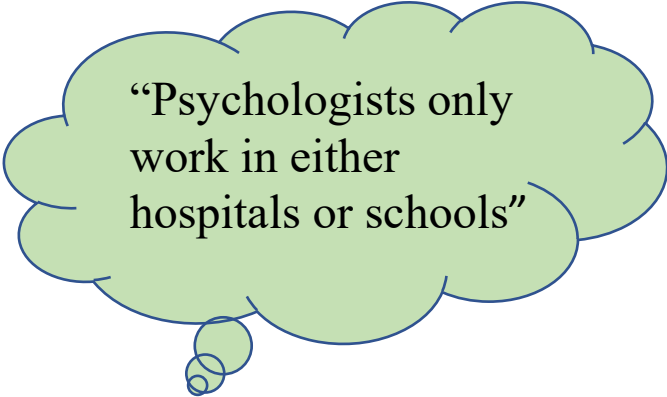
Did you know...

- Psychology is a Science?
- Psychology uses a scientific approach to studying human behaviour.
- A scientific approach means that we state a question (hypothesis), offer a theory in support of this hypothesis, and construct experiments to test this hypothesis.
- Psychologists apply what we have learned through research to understand human behaviour.

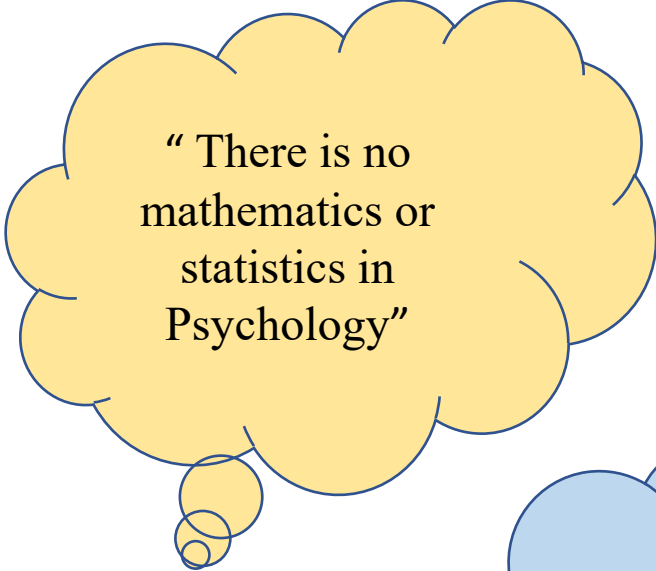
Some misconceptions about Psychology



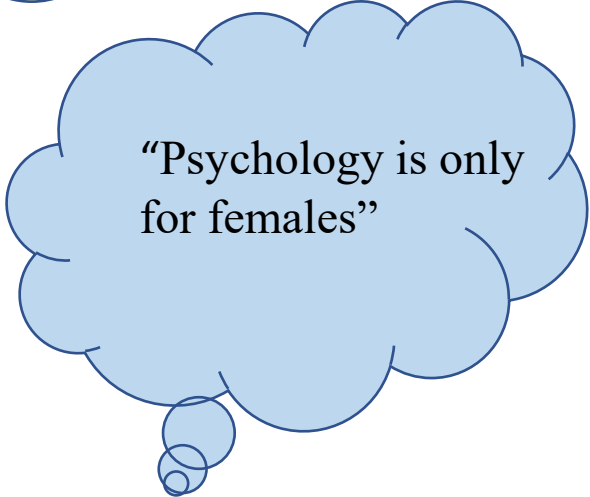
“Psychology is mostly about mental health and how it can be improved”



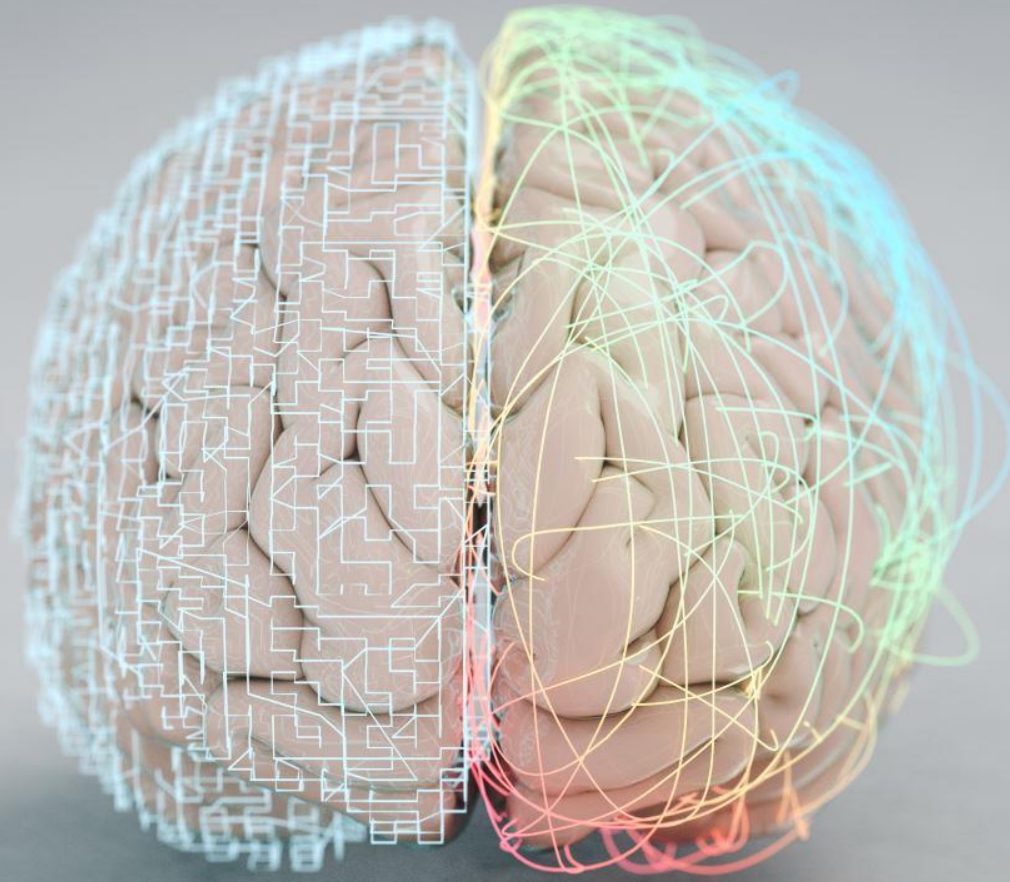
“Psychologists only work in either hospitals or schools”



“ There is no mathematics or statistics in Psychology”



“Psychology is only for females”



Psychology in Action

Where has Psychology been in action around you today?

- You have all experienced the Psychology of Advertising
- You have all experienced the Psychology of Crowds
- You will all experience the Psychology of Making Decisions



Studying Psychology at QUB

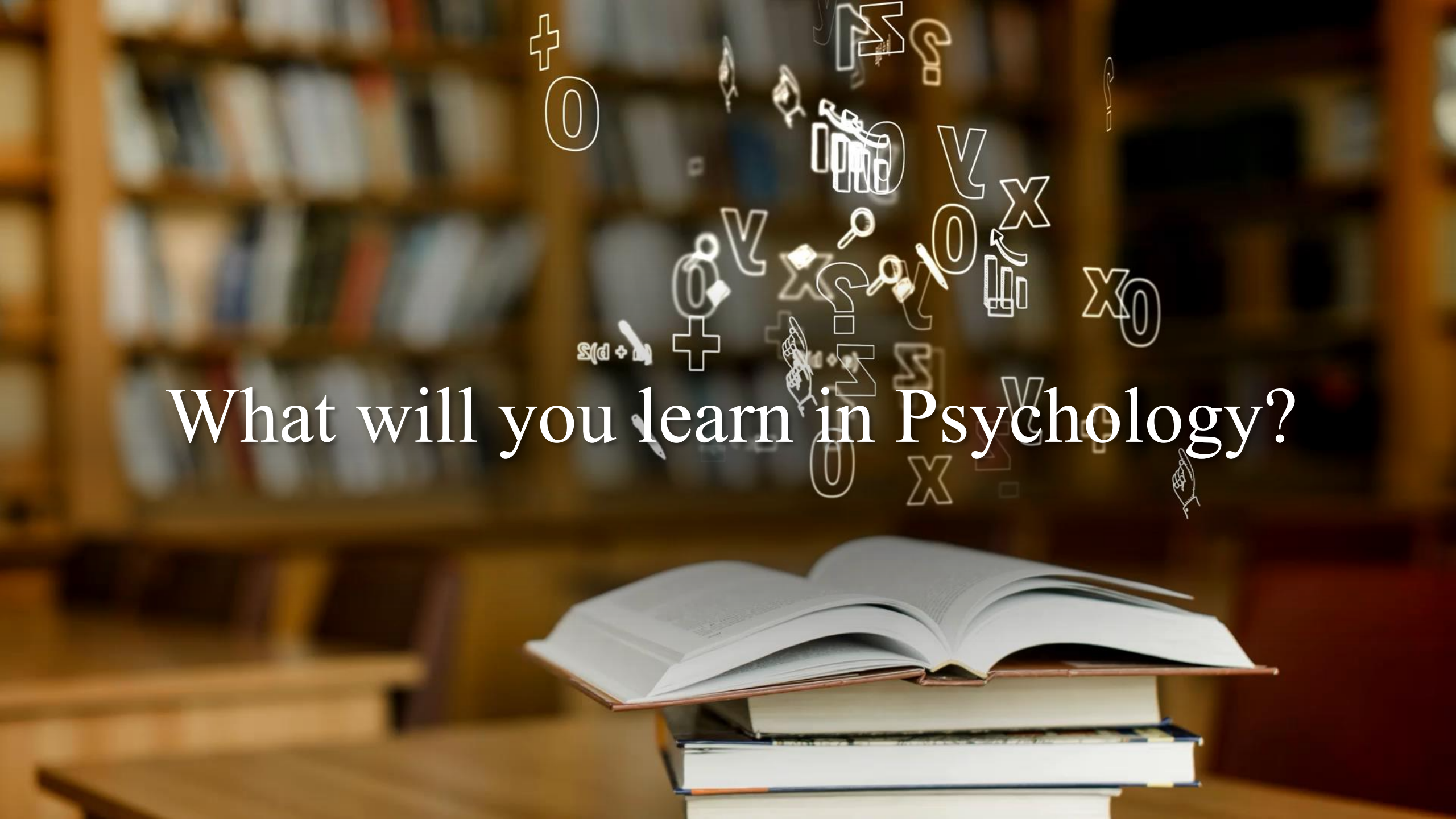




The
British
Psychological
Society

Degree Programmes Offered

- Our undergraduate degrees are accredited by the British Psychological Society (BPS) which provides Graduate Basis for Chartership with the BPS.
1. **BSc (Hons) Psychology**
 2. **BSc (Hons) Psychology with Professional Placement**



What will you learn in Psychology?

Undergraduate Programme of Study

<u>Year 1</u> Three Compulsory Modules	<u>Year 2</u> Three Compulsory Modules	<u>Year 3</u> Psychology Thesis and Choice of 4 Optional Modules
<ul style="list-style-type: none">• Foundations of Psychology (Cognitive, Developmental, and Social Psychology, Individual Differences)• Introduction to Methods in Psychology (Research Methods, Data Analysis, Historical and Ethical Issues)• Using Psychology in Everyday Life (Health and Behaviour, Forensic Psychology, Behaviour Nudges, Sleep, Animal Behaviour)	<ul style="list-style-type: none">• Core Psychology I (Social Psychology, Perception, Individual Differences)• Core Psychology II (Developmental, Cognitive Psychology, Applied Psychology, Employability)• Psychological Methods (Qualitative Analysis and Statistical Analysis)	<ul style="list-style-type: none">• Psychologists at work: Insights Into Graduate Employment• Clinical Health Psychology• Depression and Anxiety• Typical and Atypical Literacy Development• Forensic Psychology and Crime• Aging: Mind, Brain and Behaviour• Psychology of Gender• Using Nudges to Change Behaviour

How will you learn about
Psychology?





1.

Psychological content is taught through **lectures**



2.

Research and statistical skills are taught in **lab classes**



3.

Academic skills are taught in **tutorials**

You will also learn by participating in psychological research

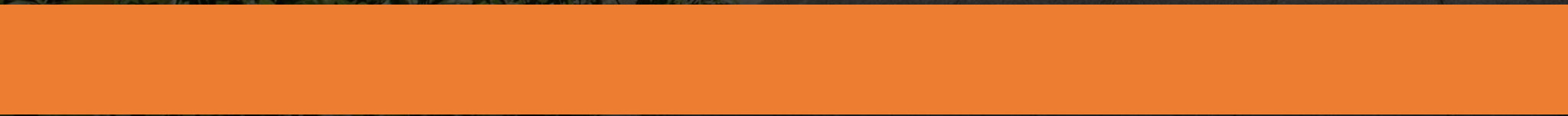


The image features a stack of three books on a wooden desk in the foreground. The top book is open, showing its pages. The background is a blurred library with bookshelves. Overlaid on the image are various white mathematical symbols and icons, including plus signs, question marks, the Greek letter sigma, the Greek letter lambda, the Greek letter alpha, and the letter X, scattered across the scene.

What is it like to be a Psychology Student?



Part of an Academic Family



The Psychology Student Experience

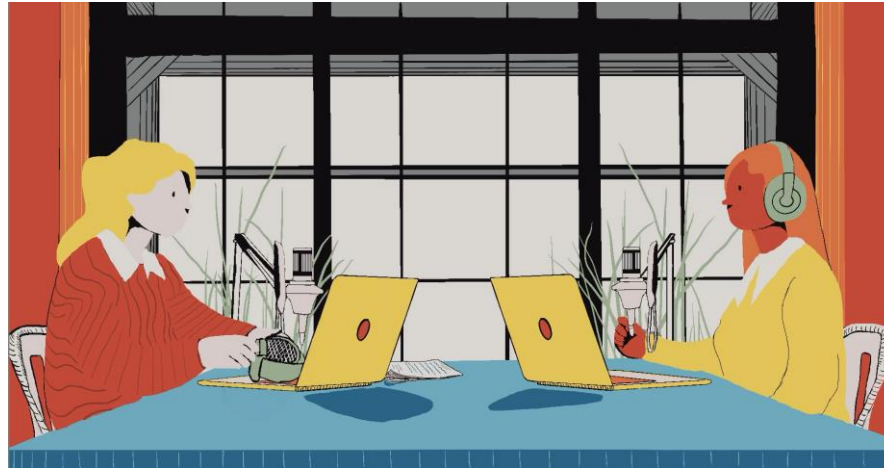
- Being a psychology student at Queen's is more than just a stimulating academic experience, you will be part of our vibrant School Community and develop on a personal and professional level.

As a Psychology Student:

- You will have opportunities to connect and grow with your peers through our School based student experience initiatives (Psychology Connect) and Peer Assisted Study Session (PASS) scheme
- You will have opportunities to develop those work-based, employability skills required for post graduate employment (Psychology At Work)
- You will be supported every step of the way academically and pastorally by dedicated staff team
- You will be graduating with academic, personal, and professional skills ready to be applied in post graduate studies or employment

PSYCHOLOGY CONNECT

QUB Psychology
Newsletter (Jan/Feb
2023)

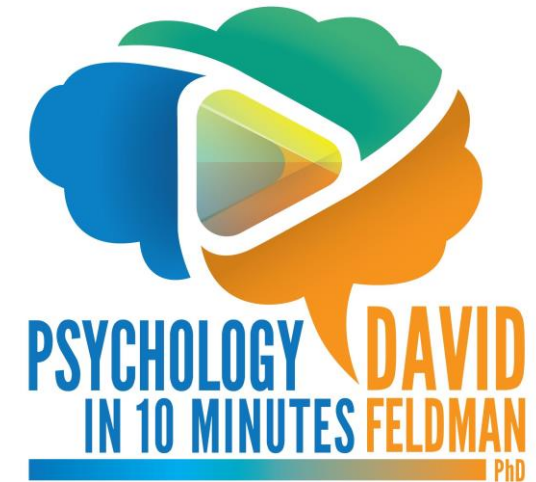


PSYCHOLOGY AT WORK

Lean into Psychology!

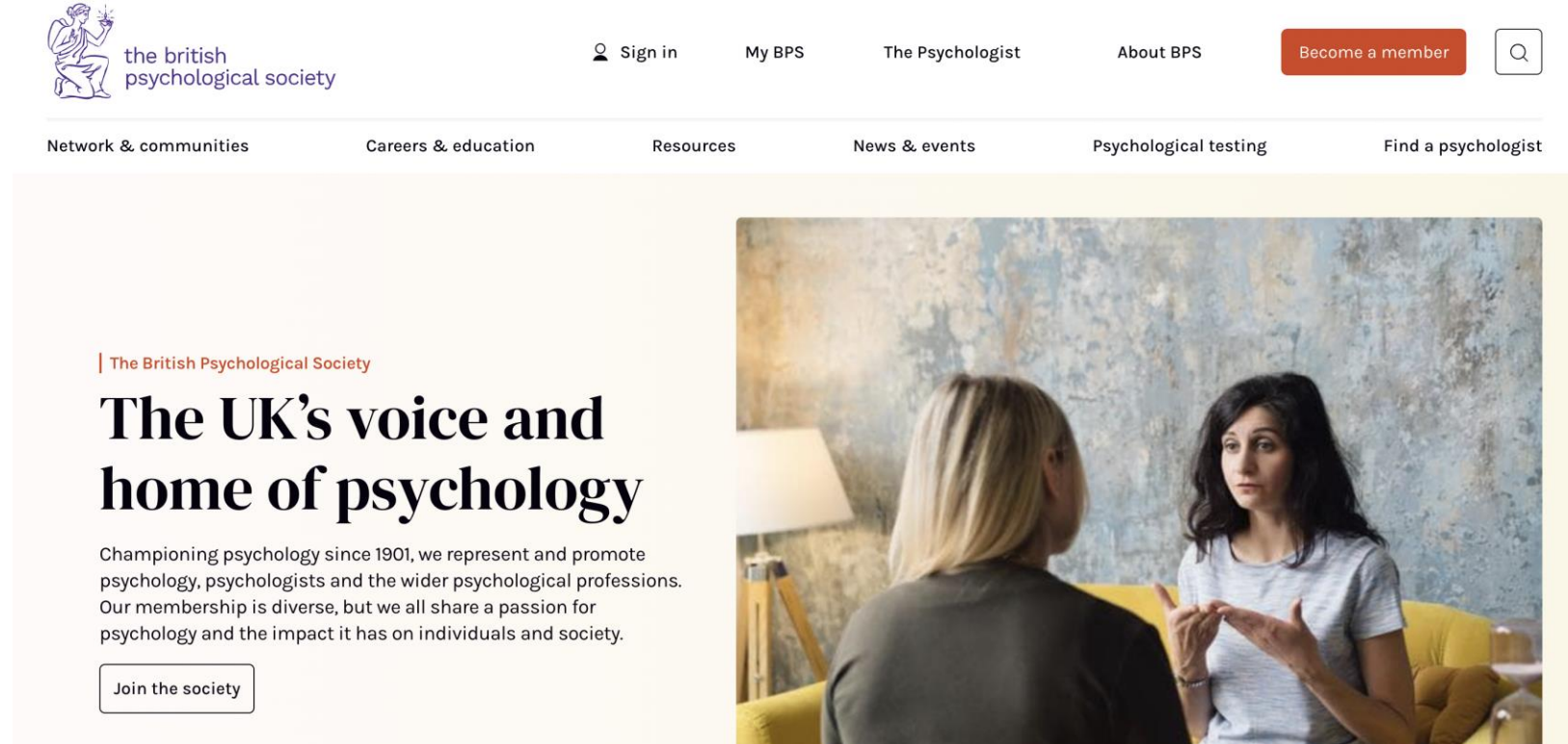
Keep your learning alive after today, have a look at some resources chosen by our lecturers for you;

- Podcasts -->



Lean into Psychology!

- British Psychological Society Website:



The screenshot shows the homepage of the British Psychological Society website. At the top left is the logo, which features a classical figure holding a torch and a scroll, with the text "the british psychological society" below it. To the right of the logo are navigation links: "Sign in", "My BPS", "The Psychologist", and "About BPS". A red button labeled "Become a member" and a search icon are also present. Below the navigation bar is a horizontal menu with links for "Network & communities", "Careers & education", "Resources", "News & events", "Psychological testing", and "Find a psychologist". The main content area features a large heading "The UK's voice and home of psychology" with a sub-heading "The British Psychological Society" above it. Below the heading is a paragraph: "Championing psychology since 1901, we represent and promote psychology, psychologists and the wider psychological professions. Our membership is diverse, but we all share a passion for psychology and the impact it has on individuals and society." A button labeled "Join the society" is positioned below the text. To the right of the text is a photograph of two women sitting on a yellow sofa, engaged in a conversation. The woman on the right is gesturing with her hands while speaking.

the british psychological society

Sign in My BPS The Psychologist About BPS Become a member

Network & communities Careers & education Resources News & events Psychological testing Find a psychologist

The British Psychological Society

The UK's voice and home of psychology

Championing psychology since 1901, we represent and promote psychology, psychologists and the wider psychological professions. Our membership is diverse, but we all share a passion for psychology and the impact it has on individuals and society.

Join the society



+

•



○



Connect with US...

- **Website:** <https://www.qub.ac.uk/schools/psy/>
- **Instagram:** @qubpsych
- **Twitter:** @qubpsych
- **Facebook:** QUB School of Psychology

Thank you for listening 😊



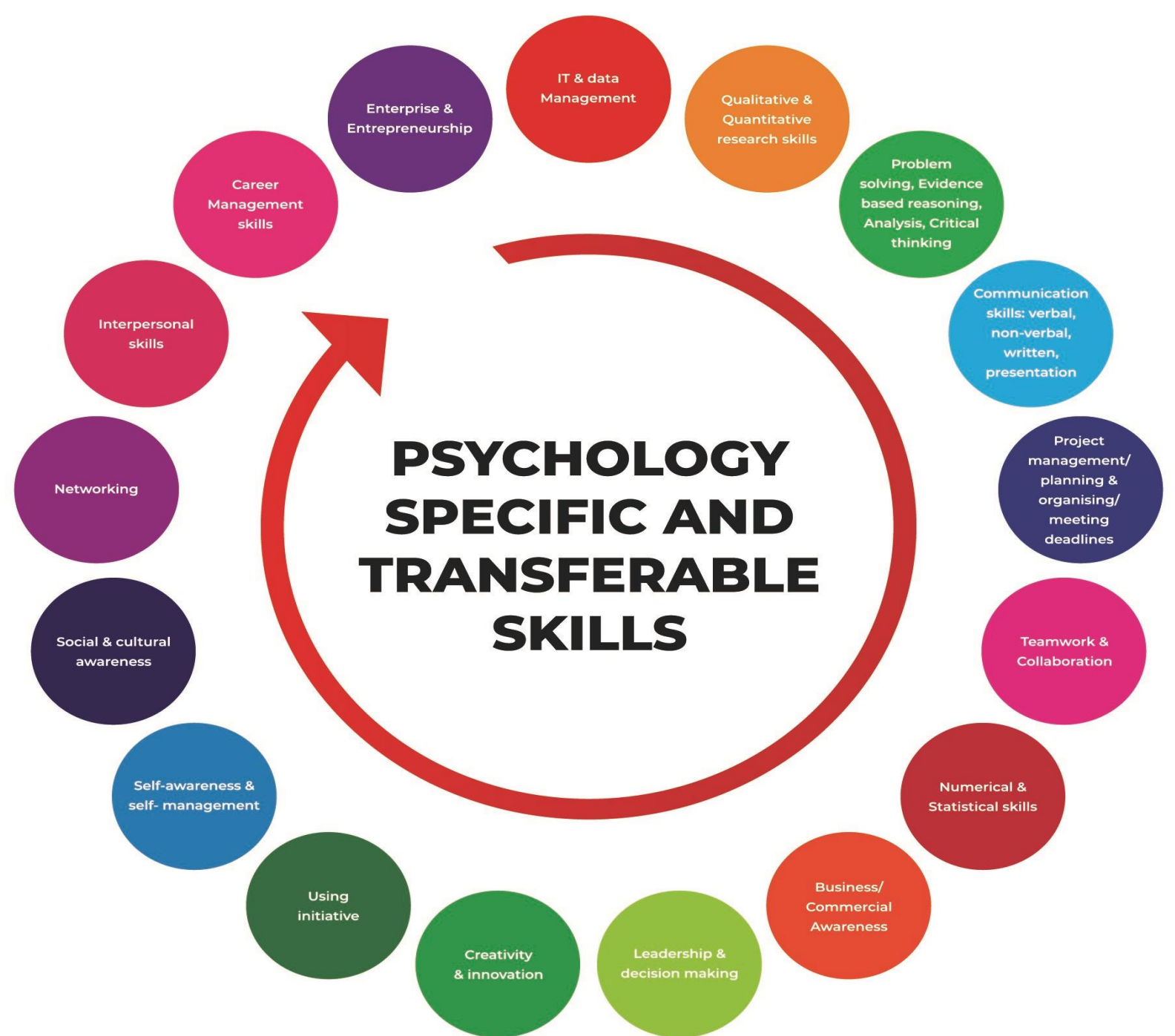


PSYCHOLOGY AT WORK

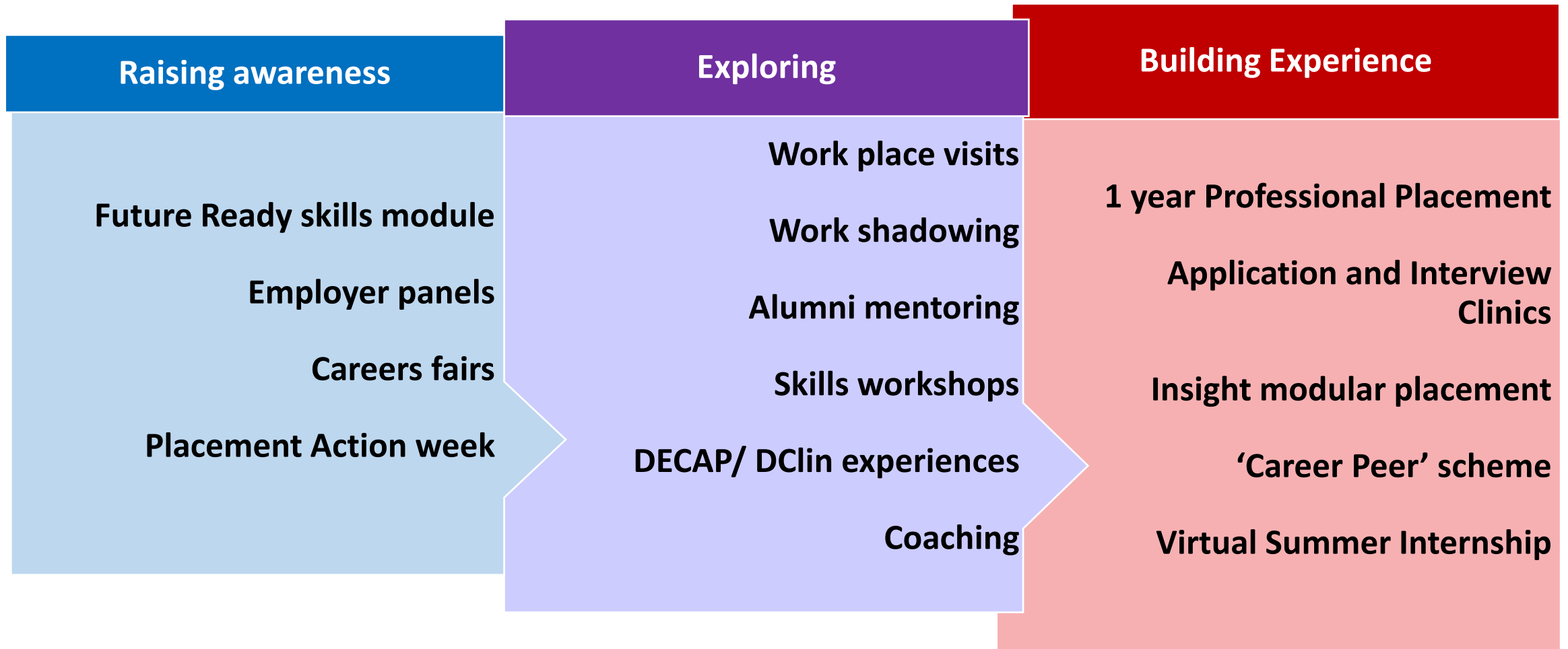


Elaine Lavery (Placement and Employability Officer)

Developing you



Developing your career thinking and career readiness



What our students say:

'Thank you for getting me in touch with Clare, who did her placement with them last year, it was very helpful and she was able to answer a lot of questions and helped me with interview prep.'

'The workshops were really enjoyable and a great exercise in self-reflection.'

'Psychology is a very very broad field and the employment opportunities are endless.'

'You encouraged me to believe in myself more and gave me and feedback on how to improve.'

'The workplace visits are interactive and engaging and a nice way to meet others across the School of Psychology.'



**QUEEN'S
UNIVERSITY
BELFAST**

PSYCHOLOGY AT WORK

Elaine Lavery

e.lavery@qub.ac.uk

<https://www.qub.ac.uk/schools/psy>

